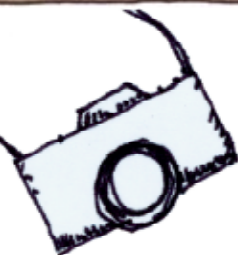


PHOTO SILLY

An Online Class
with Steve Sonheim



*"Time flies like an arrow;
fruit flies like a banana."*

— Groucho Marx

Wednesday, January 11, 2012

Worksheet #3

Assignment 3

FruitScape



Create a landscape out of food and photograph it. This might require a stop at the bizarre fruit area of the grocery store.

Stack,
cut,
sculpt,
glue,
whatever.



Try to find some interesting light to set up your shot. I recommend a table close to a window. If you can, turn your flash off for this shot (check your owner's manual for "flash always off"). Set the camera right on the table or use a tripod because you may have a long exposure. Also, use the self timer so you don't bump the camera pushing the button.

You may also need to switch to a close-up mode or set your lens to Macro (DSLR users).

Advanced Tip: use a wide aperture (small number) for a shallow depth for field. This can create the impression of distance.