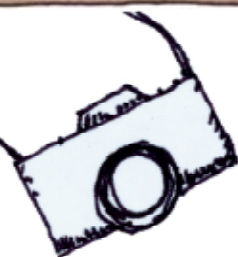


# PHOTO SILLY

An Online Class  
with Steve Sonheim



"My portraits are more  
about me than they are about  
the people I photograph."

— Richard Avedon



Tuesday, June 14, 2011

Worksheet #2

## Assignment 2

### Person or Pet



- 1) Look around for some good natural light.
- 2) Find a volunteer for a portrait.\*
- 3) Make a minimum of 30 shots. Shoot quickly and move around and have your subject move around.
- 4) Download and edit.
- 5) Pick the best and post it. Don't post more than one.

**Editing** is like growing tomatoes. First pull all the weeds, then pick everything that is ripe, then throw out the bruised, then select the best size and shape, etc.

Sometimes your favorite will jump right out. If not, try these steps (but stay relaxed and remember that it is a decision making *process*). You make the best selection by closing in on it. Circle around it for a while.

- 1) Go through and delete (yes) all the weeds.
- 2) Pick anything that is good.
- 3) Pick the best expression.
- 4) Pick the best composition.
- 5) Pick the best lighting.
- 6) Go make coffee.
- 7) Come back and look at which ones combine the best of everything.
- 8) Go with your gut.

Editing is a learned ability and a discipline. It can be harsh because it means throwing things away and not overvaluing any image. Photography is largely a process of narrowing in: What to leave in, what to leave out, what to have bright and dark, which angle, which exposure, which expression.

\*If you can't find a person or pet to cooperate, just make 30 shots of any single subject.



Metalsmith Todd Tychevicz



## Nuts & Bolts

### Settings:

**Focus:** Auto  
**ISO:** Lowest setting or Auto  
**Flash:** Off

It is essential to do several test shots before you get down to shooting for real. First do some shots of the setting before your subject even gets there to get an idea of the light. Then loosely pose the subject and take some shots and look at them. Move if needed for better light.

**PAS:** Use the portrait mode. Flash turned off.

**SLR:** Use a mode that allows you control of aperture and choose a large (small number) one. Then focus carefully.