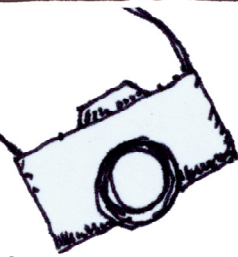


# PHOTO SILLY

An Online Class  
with Steve Sonheim



*"Maybe I'll  
paint, do photography,  
just something else."*

— Director Steven Soderbergh

Sunday, June 19, 2011

Worksheet #7

Assignment 7



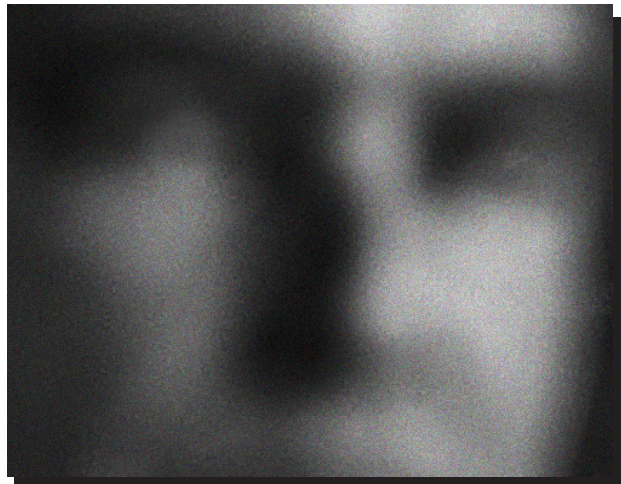
## Movie Night

Give the camera a rest.

- 1) Pick out a favorite movie  
(one you have seen before) and  
maybe someone to watch it with.
- 2) Make some popcorn or a martini.
- 3) Watch the movie.

Here's the tricky part:

- 1) Identify each scene as it opens.
- 2) Try to figure out what the mood and purpose of the scene is.
- 3) Identify how the following aspects support that mood:
  - a) **Lighting:** direction, soft or hard, light or dark
  - b) **Color:** warm or cool, saturated or muted, symbolic
  - c) **Camera angle:** high or low
  - d) **Timing:** fast action, lingering, hard or soft transitions
  - e) **Framing:** what's in the shot



Take some notes. You could even create a little scorecard for each scene using a-e from above.  
(This is great fun with a partner because you are doing something important; and irritating.)

Post your analysis of a scene on the blog today. Don't forget to give us the movie title.

### Extra Credit

Draw a sketch of what you think the movie set looks like.  
Include lights, camera, background and actors.