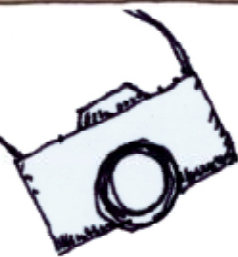


# PHOTO SILLY

An Online Class  
with Steve Sonheim



*"Time is but the stream  
I go a-fishing in."*

— Henry David Thoreau

Monday, June 20, 2011

Worksheet #8

## Assignment 8



## Take-Your-Camera-to-Work Day

For this silly assignment, you will need to take a photo every 30 minutes for an eight-hour period. You can start and end the eight hours whenever you want but you have to shoot at exactly 30-minute intervals. Subject matter is up to you.

"What if I work in a top-secret nuclear facility and can't bring my camera in?" you might ask. Well, photography is all about creative problem solving. If you work in a high-tech, top-secret place, maybe you could build a robot to take the photos for you. Or something like that.

Post as many shots (up to 20) that you can.

**Extra Credit** Arrange your 20 shots into an interesting, single collage.

### Nuts & Bolts

**PAS.**

Flash on or off. Set to a mode that fits your scene.

**SLR.**

Shoot at f/5.6 for all the shots (shallow DOF). This means using manual or an aperture priority mode. In darker settings you may need to set the camera on something because of the slow shutter speed.